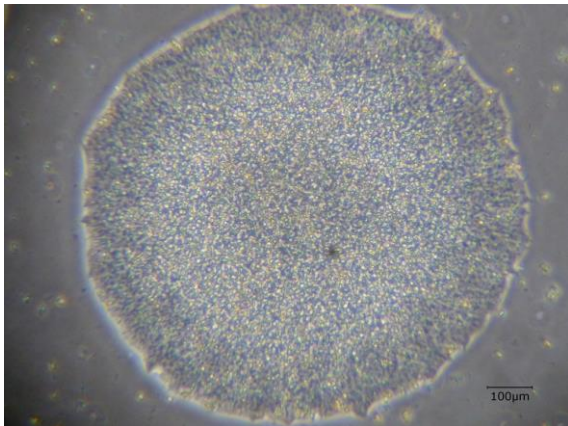
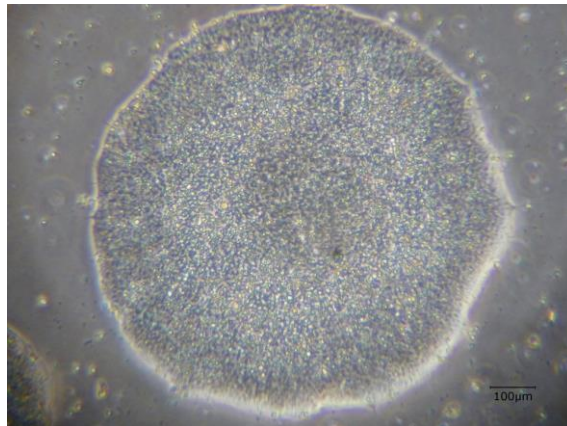


【 CiRA-j-1200 】 Morphology of iPSC colonies

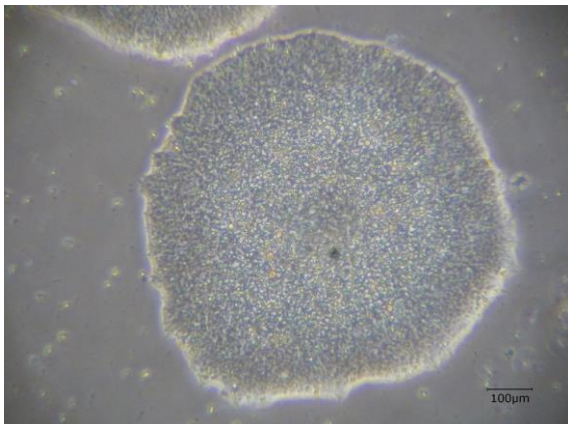
CiRA-j-1200-A: passage-3



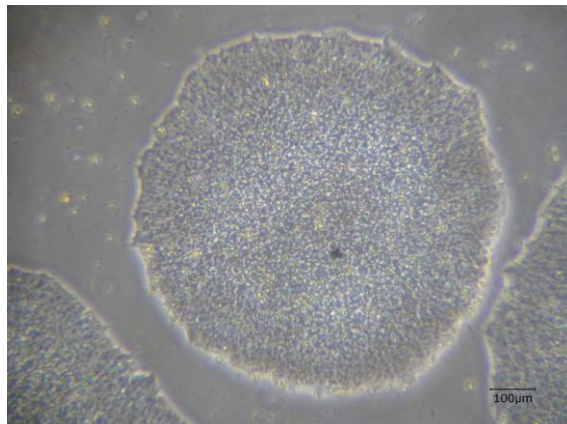
CiRA-j-1200-B: passage-3



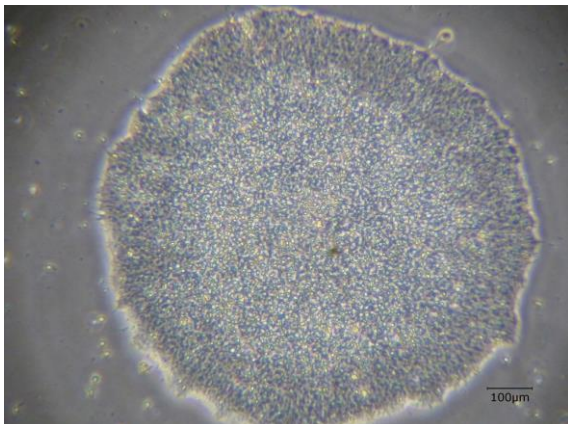
CiRA-j-1200-C: passage-3



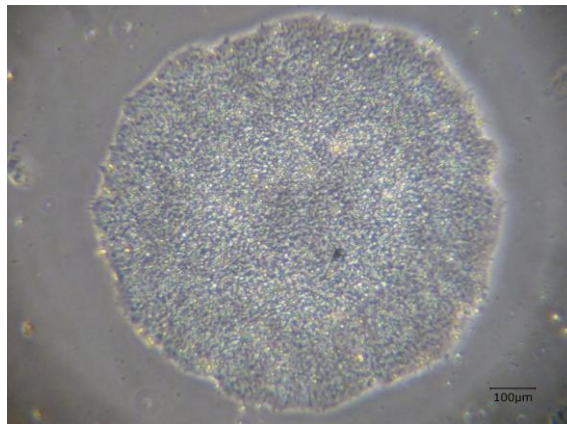
CiRA-j-1200-D: passage-3



CiRA-j-1200-E: passage-3



CiRA-j-1200-F: passage-3



(All images were captured at 4x magnification)